



NHR ORGANIC OILS
24 CHATHAM PLACE, BRIGHTON, BN1 3TN, UK
+44 (0)1273 746505 info@nhrorganicoils.com www.nhrorganicoils.com

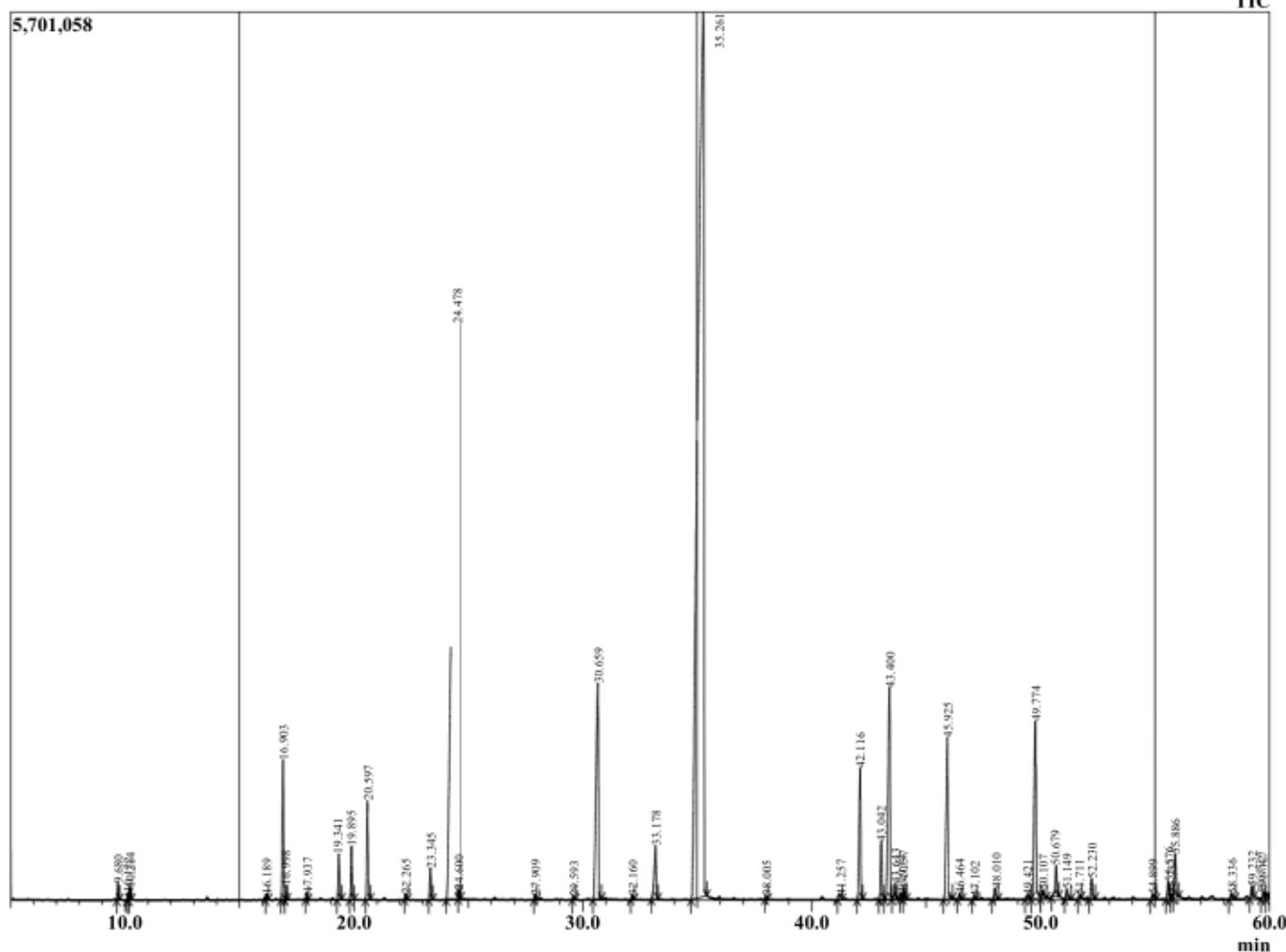
Certificate of Analysis Sheet

Organic Clary Sage Essential Oil (*Salvia sclarea*)

Sample Type : Essential Oil
Sample Name : Salvia sclarea bio sample

Injection Volume : 1.00
Data File : C:\GCMSsolution\Data\Project1\Salvia sclarea bio

Cromatogram Salvia sclarea bio : C:\GCMSsolution\Data\Project1\Salvia sclarea bio sample



R.Time	Name	Peak Report TIC	Area%
9.680	(3Z)-3-HEXEN-1-OL		0.132
10.122	2-Hexen-1-ol, (E)-		0.056
10.214	1-Hexanol		0.099
16.189	1-Octen-3-ol[RT25.891, AI974]		0.060
16.903	Myrcene		1.608
16.998	5-ISOPRENYL-2-METHYL-2-VINYLTETR		0.128
17.937	HERBOXIDE SECOND ISOMER		0.069
19.341	Limonene [RT 30.079, AI 1029]		0.509
19.895	Ocimene <Z-beta>		0.589
20.597	Ocimene <E-beta> [RT31.251, RI1044]		1.134
22.265	Linalool oxide <cis-furanoid> [RT33.211, A		0.063
23.345	Terpinolene		0.363
24.478	Linalool [RT 35.67, AI 1096]		23.703
24.600	Hotrienol [RT35.761, PI1099]		0.079
27.909	2H-Pyran, 3,6-dihydro-4-methyl-2-(2-methyl-		0.051
29.593	Terpinen-4-ol		0.040
30.659	Terpineol <alpha>		4.471
32.160	BICYCLO[3.1.1]HEPTANE, 6,6-DIMETHY		0.050
33.178	Nerol[RT45.229, AI1227]		0.895
35.261	Linalyl acetate		47.401
38.005	Geranyl formate [RT50.634, AI1298]		0.035
41.257	Cubebene <alpha>[RT54.253, AI1348]		0.109
42.116	Neryl acetate [RT54.845, AI1361]		1.823
43.042	Copaene <alpha> [RT 56.323, AI1376]		0.802
43.400	Geranyl acetate [RT56.307, AI1379]		3.465
43.643	Bourbonene <alpha> [RT56.836, AI1378]		0.227
43.934	Cadina-1(6),4-diene <cis>[RT62.224, AI1461		0.067
44.057	Elemene <beta>		0.117
45.925	Unknown diketone@59.380		2.572
46.464	Copaene <beta>[RT60.075, AI1430]		0.078
47.102	Alloaromadendrene		0.042
48.010	Humulene <alpha>		0.164
49.421	Murrola-4(14),5-diene<trans> [RT64.213 AI1		0.073
49.774	Germacrene D		2.975
50.107	Eremophilene [RT63.833, AI1193]		0.163
50.679	Bicyclogermacrene		0.472
51.149	Farnesene <alpha> [RT 64.744, AI 1505]		0.153
51.711	Cadinene <gamma-> [RT65.496, AI1513]		0.043
52.230	Cadinene <delta-> [RT65.784, AI1523]		0.295
54.899	1,5-epoxysalviaal-4(14)-ene		0.095
55.576	Spathulenol		0.259
55.731	(-)-5-Oxatricyclo[8.2.0.0(4,6)]dodecane,,12-tr		0.062
55.886	Caryophyllene oxide		0.622
58.336	Caryophyllene oxide [RT 69.954, AI 1582]		0.090
59.232	Cyclohexene, 2-ethenyl-1,3,3-trimethyl-		0.162
59.747	Eudesmol <alpha>		0.112
59.912	USpikenard@69.118		0.088
69.758	2-Pentadecanone, 6,10,14-trimethyl-		0.057
72.098	5-Octen-2-one, 6-methyl-8-(2,6,6-trimethyl-1-		0.727
73.484	(6E,10E)-7,11,15-TRIMETHYL-3-METHYL		0.042
73.673	geranyl-.alpha.-terpinene		0.060
73.852	UBlue Tansy@91.906		0.073
74.748	Retinol		0.090
75.262	geranyl-.alpha.-terpinene		0.082
75.375	geranyl-p-cymene		0.106
77.411	1H-Naphtho[2,1-b]pyran, 3-ethenyldecacyhyd		0.079
80.414	Manool [RT93.080, AI2056]		0.175
81.889	Humulane-1,6-dien-3-ol		0.046
82.685	1-Naphthalenepropanol,.alpha.-ethenyldecacyh		0.049
87.820	1-Naphthalenepropanol,.alpha.-ethenyldecacyh		1.752

Comments:

Typical Ranges of Main Components:

100.000